



ADVANCED MEDICAL CENTER

Advanced Medical Center is a 25,000 square foot award-winning medical office building designed for a prominent local doctor and his wife. To achieve a signature appearance within South Florida's architectural vernacular and to effectively define the building's geometric volumes, the sophisticated exterior employs sloped aluminum panels and coquina rock over precast concrete forms. Projecting window walls and sunscreens add another dimension to the façade while maintaining a clean and modern form. The distinctive exterior image is finished with the exclusive use of native plant material, shells in place of turf, and groundcover, palms, and trees that minimize water use, and the need for pesticides or fertilizers.

The client envisioned a comfortable and warm environment for the family practice that would carry the modern motif of the exterior to the inside, while the urgent and occupational care centers were imagined with an industrial theme. The grandiose waiting room serves as an introduction to the family practice component and differentiates this function from the additional offices on the second floor. Each department's area is partially open to the next since interactivity is common and encouraged. Partitions between spaces are treated with multiple shapes, finishes, colors, and textures to ensure each space maintains a unique identity.

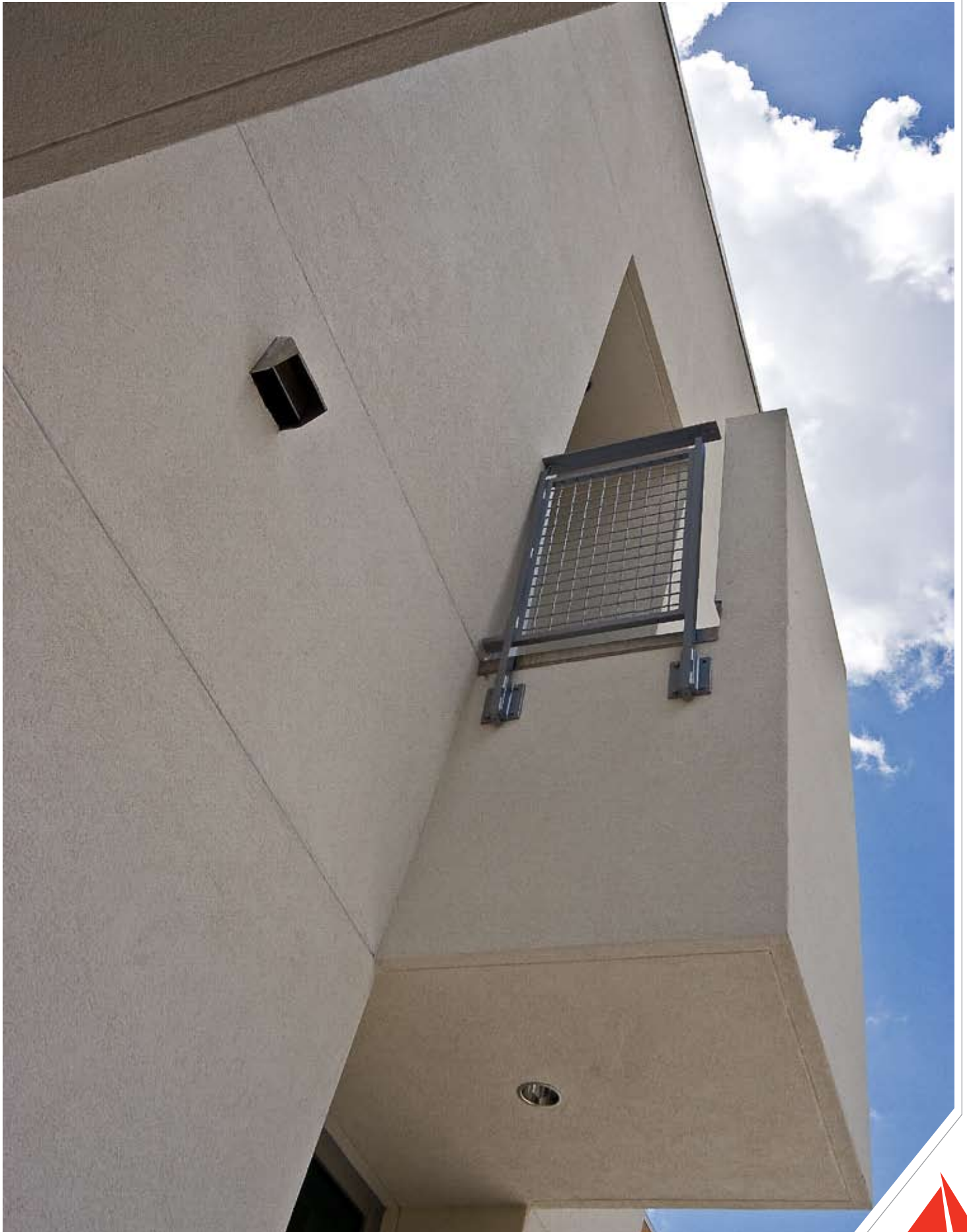


AIA Florida Southwest
2005 Award for Unbuilt Merit in Architecture

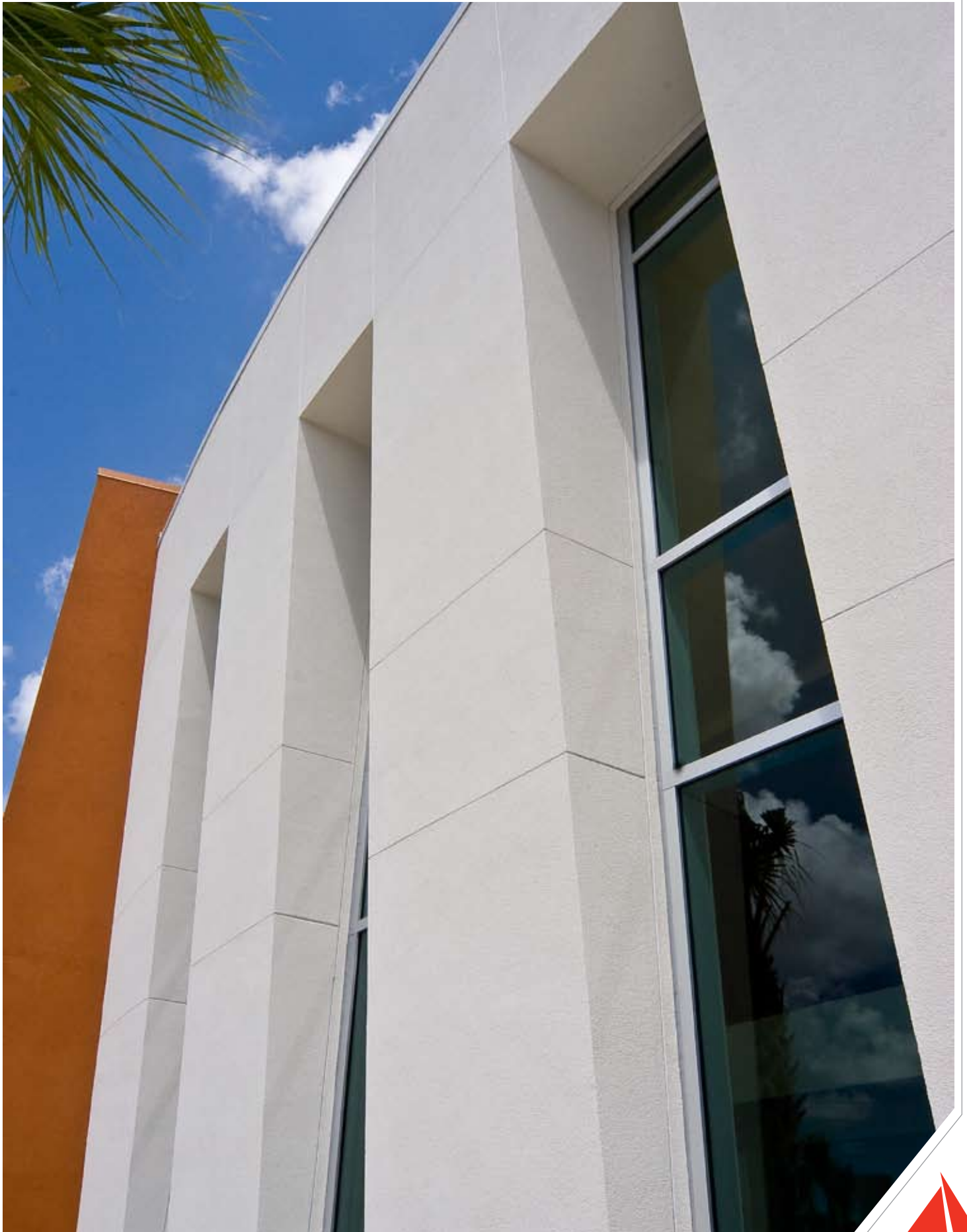


ADVANCED MEDICAL CENTER





ADVANCED MEDICAL CENTER







ADVANCED MEDICAL CENTER

